



43pl is the international consortium of SMEs in the CRC for Spatial Information

Whelans is a leading consultancy in the provision of Surveying, Mapping, Town Planning and specialist spatial services.

Whelans seeks to be at the forefront in both technology and consultancy services, providing value, quality and service to our clients.

### Services

Whelans' Services in Western Australia have evolved from the traditional areas of survey and mapping to now include urban and regional planning, environmental management, land asset management and the publishing of maps and promotional literature.

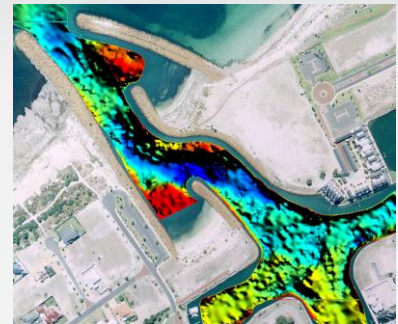
**Surveying:** Whelans Surveying Services offer a comprehensive selection of land development, cadastral, engineering and specialist surveys. Services are provided from all Western Australian offices, incurring minimal mobilisation and maximising on the benefits of local knowledge and personnel, providing fast, effective service within a competitive fee structure.

**Mapping:** Whelans Mapping provides a comprehensive range of expertise in all facets of Aerial Mapping and Ortho Image processing. Achieving a high level of production and accuracy, Whelans is able to service small to large organisations, aiming to build strong client relationships at all levels. Supplying digital vector and image data, Whelans are sought by clients who require fast, effective service within a competitive fee structure.

**Town Planning:** Whelans Town Planning provides a comprehensive array of solution-based advice in all land and property related matters, achieving quiet success since 1983. Whelans utilises its strong network of contacts and associates in Government and strategic regional offices to provide fast, effective service within a competitive fee structure.

### Market Sectors

Whelans and its forerunner companies have been serving the public and private business sectors in property and resource industries since the 1920s.



### Product / Service Examples

Whelans have established a business partner agreement with leading 3D software developer Simurban. This partnership gives extended capabilities for the production of high resolution, immersive 3D environments. We can now bring to our clients an opportunity to view data in a unique and visually enhanced 3D environment, which includes real-time camera view manoeuvrability.

### Spatial Information Disciplines

GIS and spatial analysis/visualisation, Land surveying, Engineering and mining surveying, Mapping, Town Planning, Photogrammetry,

### Company website

[www.whelans.com.au](http://www.whelans.com.au)



With 35 years' experience, Whelans are committed to providing innovative and professional services to their clients.

Whelans specialises in Surveying, Town Planning, Mapping and GIS and provides services to mining and infrastructure projects, construction, land subdivision and all aspects of development. The Company's head office is based in Perth and has a strong regional presence with offices in Karratha, Broome, Kununurra and Kalgoorlie.

## SURVEYING

Whelans Surveying provides a complete spectrum of surveying services including:

- Resource/Infrastructure Surveys
- Engineering Surveys
- Cadastral Surveys
- Land Development
- Mining Surveys
- Lease Surveys
- Asset and Facility Surveys
- Laser Scanning
- Hydrographic Surveys

The Surveying staff possess extensive knowledge of land, tenure, planning and development to achieve maximum benefits for its clients in all facets.

## TOWN PLANNING

Whelans Town Planning provides a comprehensive array of solution based advice in all land and property matters.

- Strategic Planning
- Statutory Planning
- Land Tenure Advice
- Development Management
- Rezoning
- Advocacy Submissions and appeals
- Concept and Structure Planning
- Special Rural Subdivision
- Land Subdivision
- Feasibility and Land Use Assessment

## SPATIAL CONSULTING

### Mapping

Whelans Mapping provides clients with precision and expertise to produce high quality data sets using aerial photogrammetry.

- Mine Mapping and Stockpile Volumes
- Site Rehabilitation
- Coastal Analysis Mapping
- Ortho-image Digital Imagery Prints
- Environmental Mapping
- Satellite Imagery
- Aerial Photography
- Farming and Regional Mapping

### GIS

- Decision Support
- Asset Management and Facilities Management
- Data Management
- 3D Modelling
- Satellite Imagery

### Custom Graphics

- Sales and Land Development Graphics
- Promotional Graphics
- Special Purpose Maps
- Presentation Graphics
- Graphic Design

