



crc for spatial information

# LEADING the way for all AUSTRALIANS

Cooperative Research Centre for Spatial Information



# WHAT IS SPATIAL INFORMATION?

Spatial information is fundamental to the lives of every Australian. One of the fastest growing sectors in the world, people across the country use spatial information every day in millions of different ways:

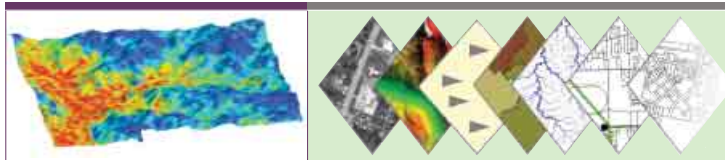
- Farmers use detailed satellite images and convert mapping data for use in precision agriculture and improved accuracy of paddock characteristics
- Emergency services staff are increasingly accessing airborne and satellite scanners to track our bushfires
- The transport industry uses global positioning systems to monitor the location of thousands of trucks and taxis
- Land administrators use geographic information systems for property transactions
- Commercial and government organisations produce, display and analyse maps of all kinds using spatial information technology
- Insurance companies are able to accurately define areas and property damaged in storms and other natural disasters using three dimensional real-time maps and forecasting

*Spatial information describes the location of objects in the real world and the relationships between objects.*

*Practical applications include environmental monitoring, mobile location-based services, customer relationship management and the management of natural resources, assets, land and emergencies. International market studies indicate that global expenditure on spatial information is in the order of \$A34 billion a year and growing at a rate of 20 per cent. The Australian spatial information industry has turnover in excess of \$1 billion.*

*The spatial information industry encompasses the broad disciplines of remote sensing and photogrammetry, mapping and surveying, land administration and geographic information systems, together with related software development and provision of value-added services.*

Source: Spatial Information Industry Action Agenda



## COOPERATIVE RESEARCH CENTRE for SPATIAL INFORMATION

**Australia aims to be a world leader in spatial information applications that are affordable, usable and readily available – any time, any place – through the Cooperative Research Centre for Spatial Information.**

The CRCSI develops and transforms spatial information for practical and everyday use through research, education, collaboration and commercialisation and technology transfer.

The CRCSI is one of Australia's newest joint venture businesses involving the partnership of more than 50 organisations from corporate, government and university sectors around Australia.

The corporate sector involves over 40 companies which have come together through 43 Pty Ltd, a unit trust company that is a core CRCSI shareholder.

The CRCSI is strongly supported by the Australian Spatial Information Business Association, the Australia New Zealand Land Information Council and the Spatial Sciences Institute.

Australians are set to benefit greatest from CRCSI research in the development of

- New and Emerging Industries, in particular the risk management sector
- Safer Communities
- Improved Environmental and Resource Management

# OUR INVESTMENT

The CRCSI brings together \$78 million in cash and in-kind from our partners to identify the questions of our future spatial information needs – who needs spatial information, in what form, and when – and to seek innovative solutions to meet these needs.

The CRCSI challenges existing assumptions and practices of information management.

We will use the collective wisdom of our broad base of participants to accelerate the growth of industry, generate intellectual property, seek efficiency gains for government, and better position the research and education programs of universities and other institutions.

## OUR PROGRAMS ENCOMPASS

### RESEARCH AND DEVELOPMENT

World-class research leading to new applications of spatial information and enabling technologies will be used to generate new wealth for the partners of the CRCSI.

The five core research areas are

- Integrated positioning and mapping systems
- Metric imagery as a spatial information source
- Spatial information system design and spatial data infrastructure
- Earth observation for renewable natural resource management
- Modelling and visualisation for spatial decision support

### EDUCATION

Opportunities in education and training for people who are or may become employed by industries using spatial information will be substantially enhanced.

With increasing emphasis on industry development, we will

- Educate existing and emerging scientists, engineers, managers and others about the fundamental advantages of spatial information and its applications
- Increase awareness and promote an understanding of the many applications of spatial information

We look internationally to build our flexible education activities.

### COMMERCIALISATION

Nurturing new intellectual property for commercialisation is the focus of this program. Its components are

- Commercialisation of research program outputs, which will include new intellectual property (software, algorithms, processes, data and information products) and hardware, through licensing, patents, and operation or sale of spin-offs
- Enhanced Australian company capabilities
- Demonstrating innovative technologies and systems
- Commercial contract research
- Collaborative research

## THE CRCSI VALUE PROPOSITION

**The CRCSI is the most powerful collaboration of partners and skilled people ever brought to bear in Australia to develop the use of spatial information to meet the needs of our rapidly growing markets.**

Here are just some of the many advantages CRCSI can bring your organisation

- We're 'bringing home' research, innovation and information and we support key networks across this highly specialised industry
- We can help you discover the benefits and get in touch with people at the front line of foundation spatial information research and development
- Our partnership with more than 40 small and medium enterprises provides your businesses with an opportunity to get involved with our unique industry network
- Our relationships with major government departments and users of information harness the power of the public-private interface

# KEY STAKEHOLDERS



## SUPPORT PARTICIPANTS

Defence Imagery and Geospatial Organisation

ESRI Australia

Intergraph

## FURTHER INFORMATION

To find out more about spatial information and the CRCSI visit [www.crcsi.com.au](http://www.crcsi.com.au)

### HEAD OFFICE

Peter Woodgate  
Chief Executive Officer

Cooperative Research Centre for Spatial Information  
Ground Floor 723 Swanston Street  
Parkville VIC 3052 Australia

t + 61 3 8344 9200  
f + 61 3 9349 5185  
[info@crcsi.com.au](mailto:info@crcsi.com.au)



Established and supported under the Australian Government's CRC Programme

[www.crcsi.com.au](http://www.crcsi.com.au)