

DELIVERING STRUCTURAL, ECONOMIC & SOCIAL BENEFITS

An innovation, commercialisation & capacity building collaboration between government, industry & academia

HOW DO I JOIN THE CRCSI ?

The CRCSI was founded in 2003. In 2009 it was successful in gaining additional new funding from participants (the partners) and the Australian Government for a further period 2010-2018. This second phase of the CRCSI involves agreements with over 100 participants in an unincorporated joint venture. These agreements set out roles, responsibilities and privileges of all participants including the management company set up to run the unincorporated joint venture

New organisations are welcome to join the CRCSI. There are a variety of ways of doing this, depending on commitments and expectations.

CRCSI is a large enterprise, and operates in a complex environment of public, private and academic sectors. CRCSI management can explain the ways in which your organisation can participate in and interact with the CRCSI. This note provides some useful information and more is available through the CRCSI websites.

Please feel free to contact Mike Ridout, CRCSI Communications Director, if you wish to discuss the CRCSI, including anything of a confidential nature.

mridout@crcsi.com.au

+61 8 9386 5967

www.crcsi.com.au

www.crcsi.ecampus.com.au

www.crcsi2.com.au

home website

education portal

transition web site

WHAT SORT OF PARTICIPANT CATEGORIES ARE THERE?

ESSENTIAL PARTICIPANTS are those who make substantial cash and in kind commitments and influence the work program and achievements of the CRCSI. Essential Participants:

- 1 Participate in the process of selecting Board directors and have the right to nominate individuals for possible appointment to the Board and its committees and taskforces including the Project Boards that guide individual projects
- 2 Have a beneficial interest in CRCSI generated intellectual property (Centre IP or CIP) based on respective cumulative cash contributions to the CRCSI and are able to use any CRCSI-owned IP for their own internal purposes (but not for commercialisation)
- 3 Have exclusive first rights to bid for commercialisation rights of CIP
- 4 Contribute preferentially to the strategic directions of the CRCSI under Board guidance
- 5 Typically have a high level of engagement in research and other projects across the CRCSI portfolio, or at great depth within a certain area of the CRCSI portfolio
- 6 Are able to attend the annual conference of the CRCSI to learn about the latest research developments and to actively network. These conferences are only open to CRCSI participants.
- 7 Are expected to be in the CRCSI for the long term
- 8 Make annual contributions of:
 - \$300,000 untied cash for government agencies
 - \$500,000 untied cash for groups of government agencies within a geographic jurisdiction¹ and for other consortia.
 - \$300,000 untied cash for large corporate entities
 - \$3,000, \$6000, \$12,000 untied cash or more for 43pl participants² subject to discretion that allows for company size and level of anticipated engagement
 - \$150,000 untied cash for universities

SUPPORT PARTICIPANTS are not Essential Participants but play an important role in the CRCSI, contributing cash and or in-kind resources. Support participants:

- 1 Provide input to the CRCSI through annual Participant Fora and other events like the internal conference and the CRCSI stakeholder review process
- 2 May not necessarily be in the CRCSI for the long term
- 3 May participate in projects across the CRCSI portfolio
- 4 Typically contribute less cash and other resources than Essential Participants
- 5 Attend the annual conference
- 6 At the discretion of the Board
 - Have second right of refusal to Centre IP commercialisation processes
 - Have full access to business efficiency outcomes
 - Feature less prominently on CRCSI websites and print materials
 - Are eligible to nominate people for consideration for the Board and CRCSI committees
 - Have access to Project IP (for the projects in which they are active and make contributions to) rather than the Centre IP

THIRD PARTY PARTICIPANTS have no input to the strategic direction of the CRCSI or its governance. Frequently these arrangements are used for contracted research, or for organisations that have a specific and short term interest in a CRCSI capability. Third Party Participants:

- 1 Engage in a specific project by executing a standard third party agreement and contribute cash and in kind to the levels agreed for the conduct of the project

¹ If there is more than one government agency in a jurisdiction it is expected that the ANZLIC member will be the lead agency for that jurisdiction. ANZLIC is the peak government council in Australia and New Zealand for government agencies at federal, State and Territory levels for spatial information and policy.

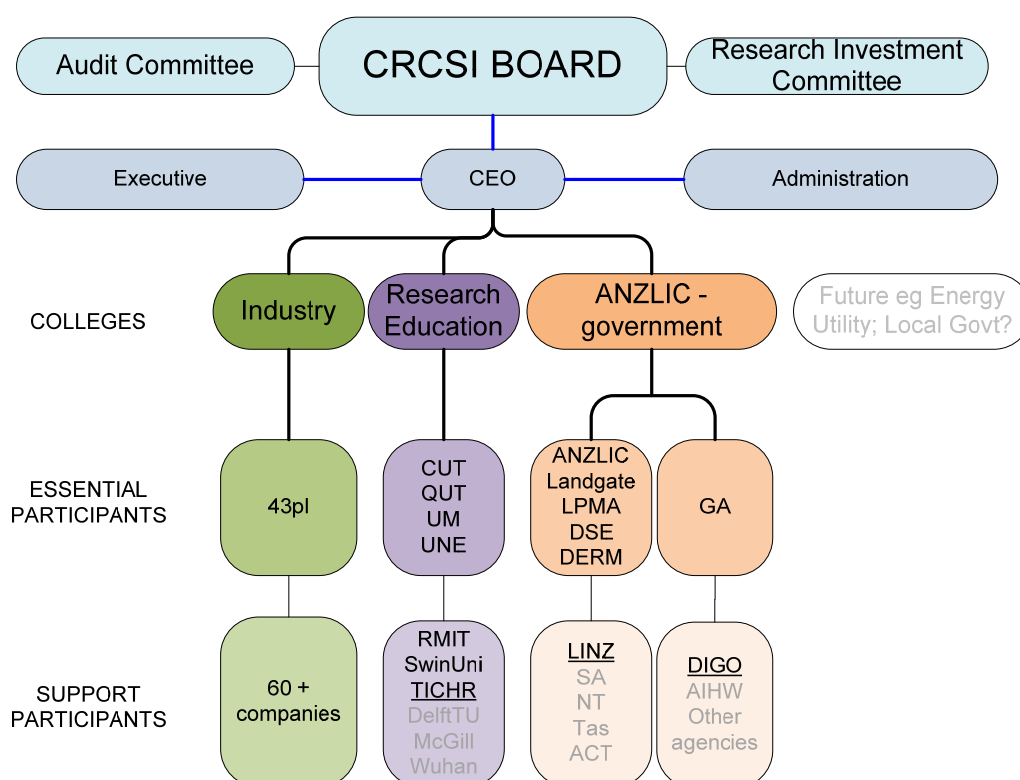
² 43pl is the name of the CRCSI's consortium of companies.

HOW DO ALL THE PARTICIPANTS WORK TOGETHER?

CRCSI has a “college” system which groups like entities together in three consortia:

- **43PL – THE SME CONSORTIUM** –represents the interests of the 60+ companies which have joined the CRCSI. New members are formally admitted annually but can access the benefits at any time during the year. Surprisingly little churn in membership has occurred, despite the opportunity to leave on 11 month’s notice.
- **ANZLIC (THE AUSTRALIA AND NEW ZEALAND LAND INFORMATION COUNCIL)** – the pre-existing council of our land agencies have agreed to represent their CRCSI participant members, with a view to keeping open the channels of communication with those jurisdictions not yet participating in the CRCSI. Australian federal government agencies are represented through a ‘sub-consortium’ led by Geosciences Australia.
- **RESEARCH AND EDUCATION COLLEGE** – including research bodies such as the Telethon Institute for Child Health Research as well as of course the CRCSI universities.

The figure below illustrates how the CRCSI has structured its members to harness the power of such large participation while maintaining effective communications and ‘ownership.’



HOW DO PROJECTS WORK?

Projects are the building blocks of the CRCSI. Each project has an agreement executed by the parties involved wherein the project aims, milestones, budget, etc are described in as much detail as can be achieved. IP generated is dealt with in a transparent way through protocols laid down by the CRCSI Board and implemented by CRCSI management which has collectively decades of experience in collaborative research development and commercialisation.

HOW IS IP TREATED?

Spatial Information Systems Research Limited (SISRL) has been established to hold IP generated from CRCSI projects (Centre IP or CIP). SISRL is responsible for the commercialisation of CIP, including marketing, seeking potential licensees and seeking other commercial applications. If SISRL wishes to commercialise any CIP it seeks expressions of interest (EOI) from each CRCSI Essential Participant and each 43pl company to commercialise, or participate in the commercialisation of, the CIP.

The following principles apply to the ownership and management of IP:

- the intention to facilitate rapid uptake (and improved capability) by end-user participants and stakeholders, with an emphasis on increased national benefit
- innovative use of IP including partnering research providers having a 'free' licence to use the IP for their internal research purposes
- the Board will endeavour to make a priori decisions about the commercial potential of investments in IP through its own research. Where there is no commercial uptake (and no national security or privacy issues) then consideration will be given to putting the IP in the public domain
- the end-user uptake pathway will have an explicit emphasis on partnering private sector and government organisations. This will not operate to the detriment of CRCSI-2's large corporate participants
- The CRCSI will use its internal EOI process to seek commercialisation plans from CRCSI participants.
- Recognition of the substantial public benefits of the principle of open access

Ownership of Centre IP is intended to be run in the same manner as under the first phase of the CRCSI, that is:

- SISRL will act as trustee, holding the CIP on trust on behalf of the Essential Participants
- SISRL will hold legal ownership of the CIP and the Essential Participants will retain beneficial ownership
- Beneficial ownership of Centre IP will be determined in proportion to each Essential Participant's Equity in the Centre, which is based upon their cash contributions to the CRCSI, rather than on a project by project basis.

The new arrangements will also provide for occasional ownership of Project IP. Project IP will be owned by the participants in the project in accordance with a project agreement but only when determined by the Governing Board. It is not intended that this mechanism will be commonly used but it will add extra flexibility in terms of projects with special characteristics (for example, if third parties are involved). In the normal course of events the CRCSI will use its internal EOI process to seek commercialisation and utilisation plans from CRCSI participants. However the Board will have the discretion to waive this process and offer exclusive IP rights (including 'project rights'), supported under NDA's if required, to individual participants if by doing so the Board feels this is in the best interests of CRCSI and its participants collectively. (This principle protects private sector participants in particular who may have a good idea but are reluctant to come forward for fear of losing it to others).

COMMERCIALISATION PROCESS

The management company of the CRCSI, Spatial Information Systems Research Limited (SISRL) is the holder of intellectual property generated and owned by the CRCSI (known as "Centre Intellectual Property" or CIP). It is responsible for the commercialisation of CIP including marketing, seeking potential licensees and seeking other commercial applications.

Put simply, if SISRL intends to commercialise any CIP, it must advise each CRC Essential Participant (including all 43pl companies) in writing and each participant has a period in which to express a desire to commercialise or participate in the commercialisation of the CIP. If no participant desires to commercialise then SISRL is free to commercialise the CIP in the manner it sees fit. The details of the commercialisation plan for the CRCSI, including the patent and licensing strategies, are documented within the Commercialisation and Utilisation Plan.

WHAT ARE THE BENEFITS OF JOINING?

Benefits to participants include

- Intellectual Property access for commercialisation and internal business improvement
- Networking across the technical and business spectrum
- Funding for R&D and business improvement
- Access to experts in markets and technologies
- R&D teams tailoring projects to business needs
- Early awareness of emerging technologies
- A brokerage service for public-private partnerships
- New markets and international relationships opened up
- Upskilling opportunities for employees – access to scholarships, short courses, workshops
- Facilitated access to innovation, seed funding and venture capital

NEXT STEPS OR FURTHER INFORMATION

If you are interested in the CRCSI please feel free to contact us below. We will be pleased to answer your questions and provide contacts for further detail.

Australia

New Zealand

Headquarters

Spatial Vision initially viewed its participation in the CRCSI and 43pl with some circumspection. However, since joining, we have been involved in a number of research projects that have delivered significant benefits to the company. These benefits include enhancing our expertise in a number of key technologies, the opportunity to work more closely with some our existing and potential clients, and generally raising awareness of our company by being associated with the CRCSI activities more generally.

Other benefits include being part of the network of government agencies, academic institutions and companies that form the CRCSI, participation in the CRCSI's annual conference, and the ability to participate in projects extended to 43pl companies only.

All in all, Spatial Vision's involvement with the CRCSI has been most beneficial to the company and our staff, and we would commend the CRCSI to any member of the spatial industry prepared to get involved.

Glenn Cockerton MD of Spatial Vision

Mike Ridout Communications Director	Mary Sue Severn CRCSI New Zealand Director	Peter Woodgate CEO
+61 3 8344 9200	+64 4 460 0188	+61 3 8344 9200
mridout@crcsi.com.au	msevern@crcsi.co.nz	pwoodgate@crcsi.com.au
3 Loftus St Nedlands WA 6009	Land Information New Zealand Level 11, 160 Lambton Quay Wellington New Zealand	University of Melbourne Ground Floor, 723 Swanston Street Melbourne, VIC 3010 Australia